

Technical drawing of a beam-column joint showing reinforcement details for two cases: (a) beam fixed to column and (b) column fixed to beam. The drawing shows a cross-section of a beam with width  $b$  and height  $h$ . Reinforcement includes top bars (14), bottom bars (28), and stirrups (43). Dimensions include 10-120 for stirrup spacing and 15 for lap length.

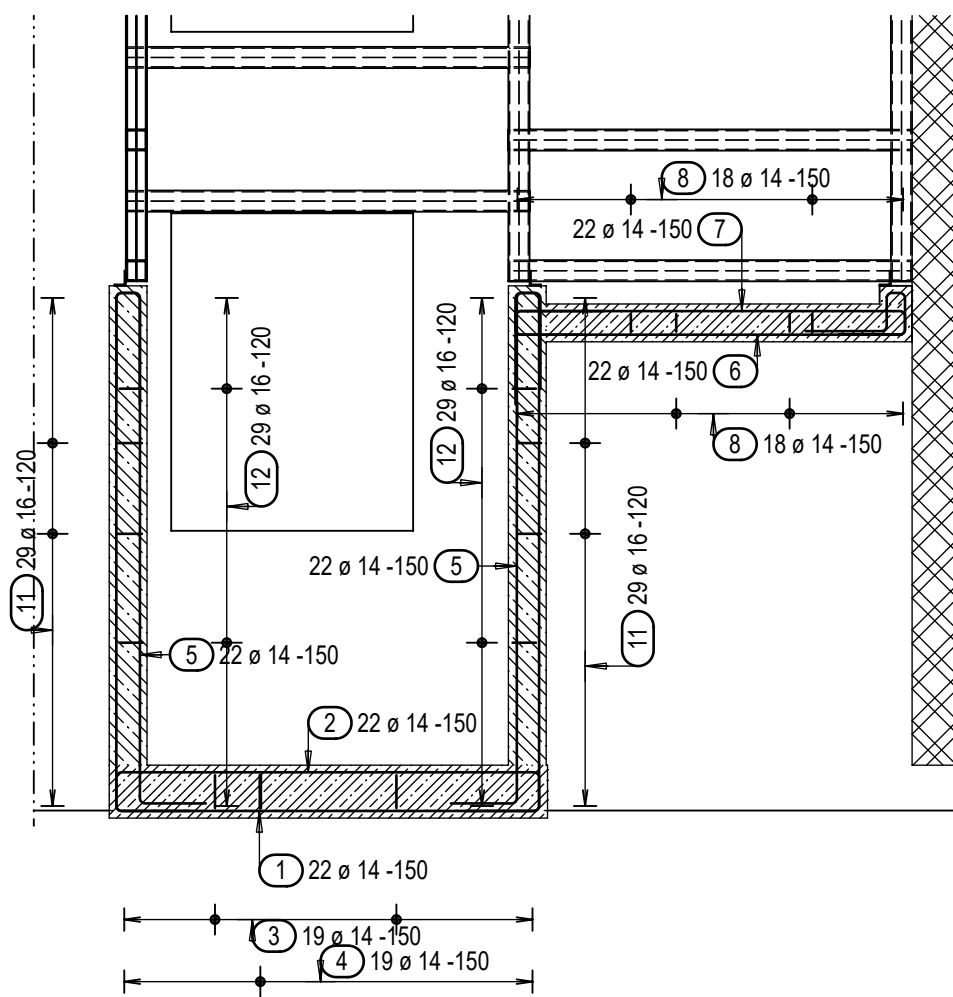
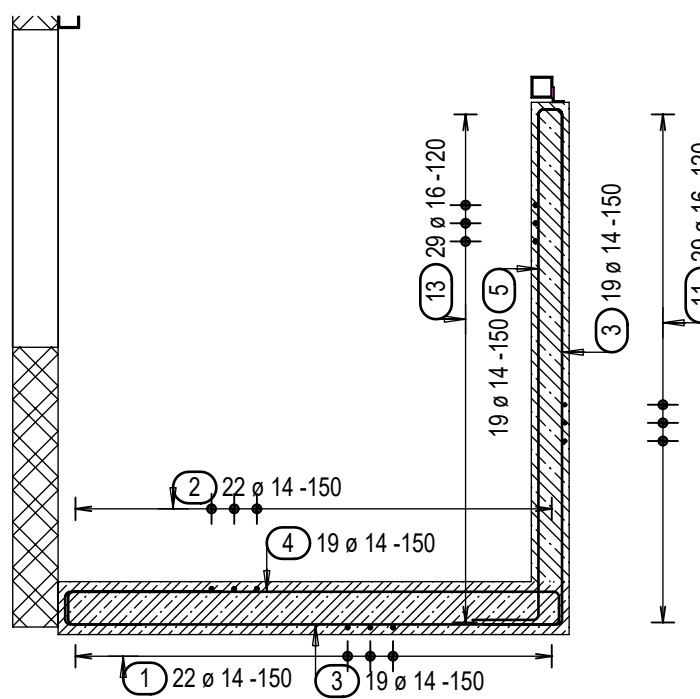
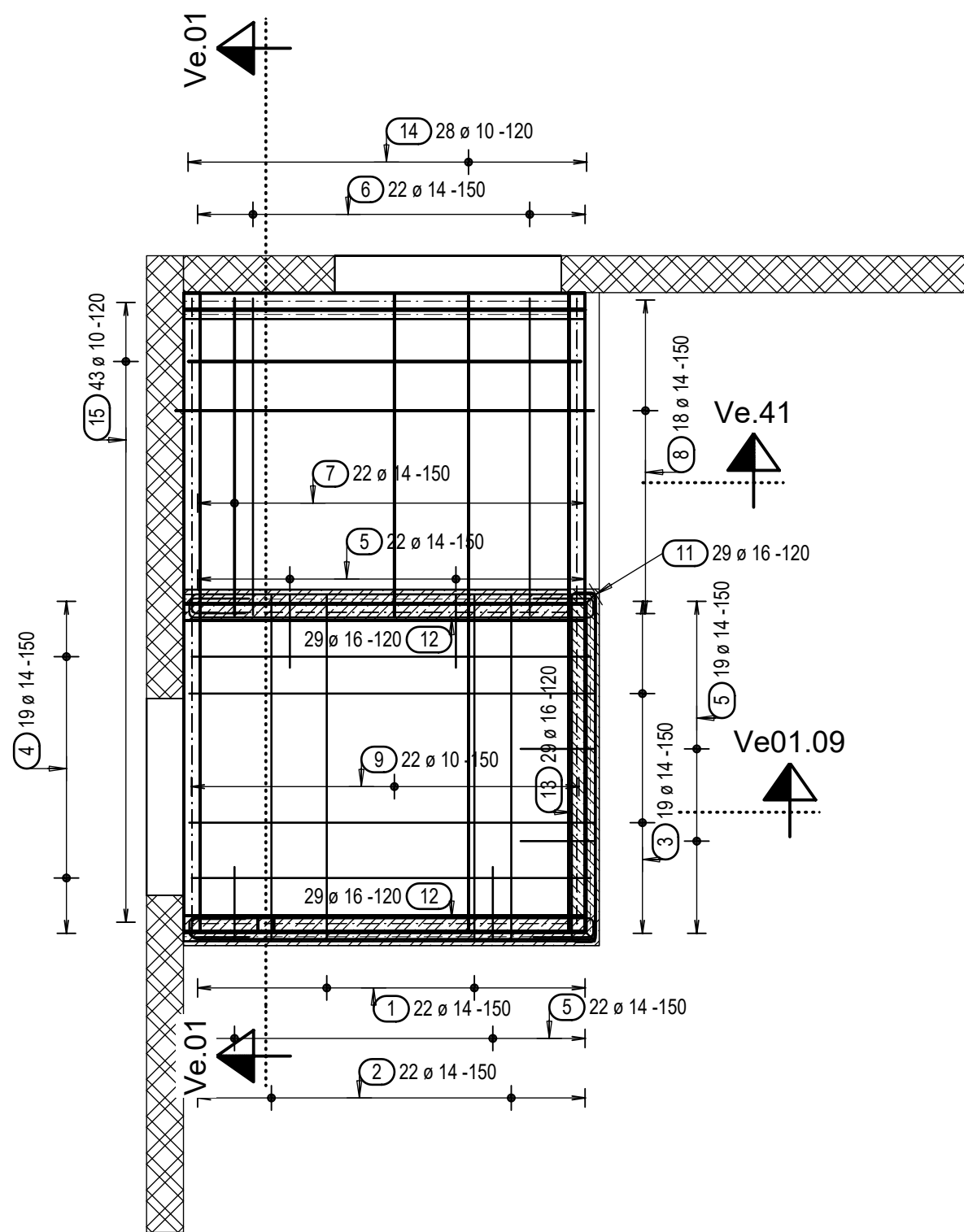
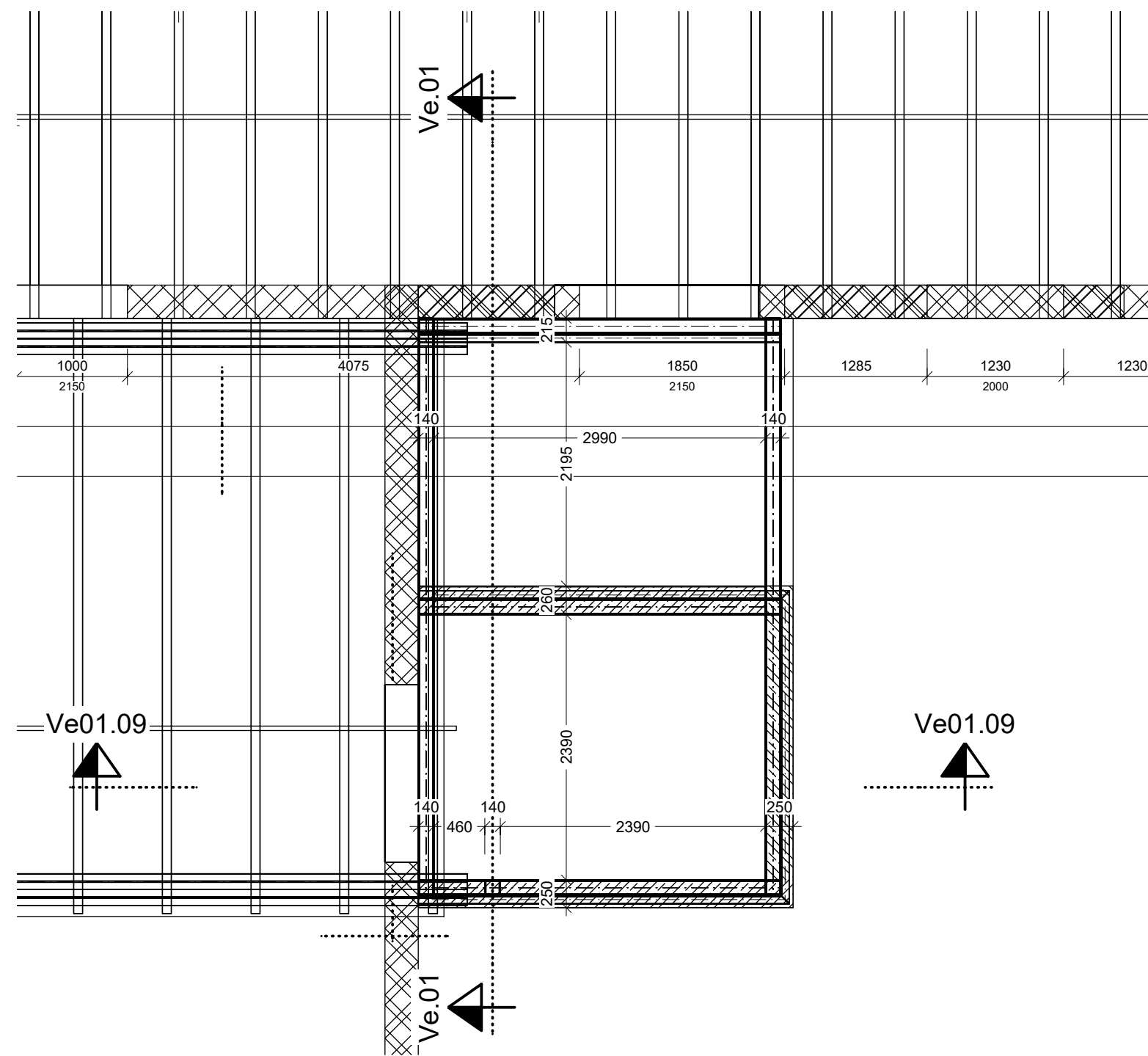


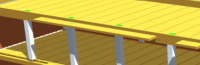
Schéma podest

18  $\varnothing$  10 - 150 (10)

18  $\varnothing$  10 - 150 (10)

[illegible]

Dokumentace nemůže nahradit dílenskou dokumentaci



Profese						Stupeň dokumentace			Podlaží		Poř. číslo			Index
D	1	2	/			D	P	S	5	5	0	0	1	

Přehled		Počet	Celková délka	Celková plocha	Celková hmotnost (t'q)
Nosníky a sloupky	CFRHS 140X140X8.8	69,0	322,26 m		11 009,43 kg
	L 100X75X9	4,0	12,78 m		151,48 kg
	<b>Celkem</b>	73,0	335,04 m		11 160,91 kg